



imaginal education group
awakening minds, imagining futures

LEAD FROM THE END

Leveraging the power of reciprocity
for educational success

Dr. Ivy Bonk

Educational Psychologist/Consultant



What People are Saying

“Dr. Ivy’s presentation on trauma and its impact on learning has provided the understanding needed for policymaking for children and those who want them to be successful.”

*Representative Debra Moody,
TN Legislator*

“In a nutshell, Dr. Ivy is able to connect the dots of others to achieve results they only dream about, and with rapid-fire speed.”

*Sher Valenzuela, FSM
(Nationally-recognized Small
Business)*

“If I had had this training my first year of teaching, it would have made all the difference.”

*Chaunda Fabio,
High School Educator*

“Dr. Ivy’s insight into the multi-faceted issues facing children of poverty and trauma is impressive as is her ability to offer solutions that meet cross-sector demands to systems and governments.”

*Zoila Patricia Cruz Cerrato, Deputy
Minister of Social Integration, Republic
of Honduras*

“Dr. Ivy is gifted at applying innovation and quantitative ideas to an organization’s processes and systems while maintaining the flexibility necessary to adapt and reassess within an ever-changing terrain.”

Dr. Amir Mohammadi, SRU

“This training is what is needed to turn the tide in education.”

*Dr. Anita Silverman,
Transitions Academy*

Answering the Charge

The demographic of students you are charged with serving with opportunity (access) to a quality education are students who are at high-risk for having lived through or maybe **living in an adverse experience which interrupts their development.**

This interruption of student development impedes learning in the classroom.

A student's inability to trust puts them at arms-length emotionally and cognitively with the person who is responsible for delivering the service for which you are being held accountable.



Pile up on Poverty Turnpike and Trauma Blvd.

Endgame



Student Success

The same thing that your students need from their teacher, your teachers need from you.

Remember, often times what you are receiving can be an indicator of what you are giving out.

12 Principles of Reciprocal Leadership



Reciprocal leadership means giving in order to receive, it means leading from the end.

- ↪ Reciprocity is a natural law.
- ↪ Reciprocity is outward facing and others-focused.
- ↪ Reciprocity requires authenticity.
- ↪ Reciprocity is key to force multiplication.
- ↪ Reciprocity is essential for turning silos into circles.
- ↪ Reciprocity progresses based on the exchange of leader-follower.
- ↪ Reciprocity changes the way you see.
- ↪ Reciprocity has a compounding effect.
- ↪ Reciprocity is facilitated by a common goal or purpose.
- ↪ Reciprocity is courageous.
- ↪ Reciprocity is individual, yet interdependent.
- ↪ Reciprocity is more concerned with the infinite game than the finite game.

Principle #1

Reciprocity is
a natural law.

Trauma Connect

Attachment



Principle #2

Reciprocity is outward facing
and others-focused.

Trauma Connect

Relationship

Principle #3

Reciprocity requires authenticity.

Trauma Connect

Safe environment

Principle #4

Reciprocity is
key to force
multiplication.

Trauma Connect

Self-care through
team building.



Principle #5

Reciprocity is essential
for turning silos into circles.

Trauma Connect

Sustainability through
communication.

Principle #6

Reciprocity progresses based on the exchange of leader-follower.

Trauma Connect

Dysregulation



Principle #7

Reciprocity changes the way you see.

Trauma Connect

Variability and causality.

Principle #8

Reciprocity has a compounding effect.

Trauma Connect

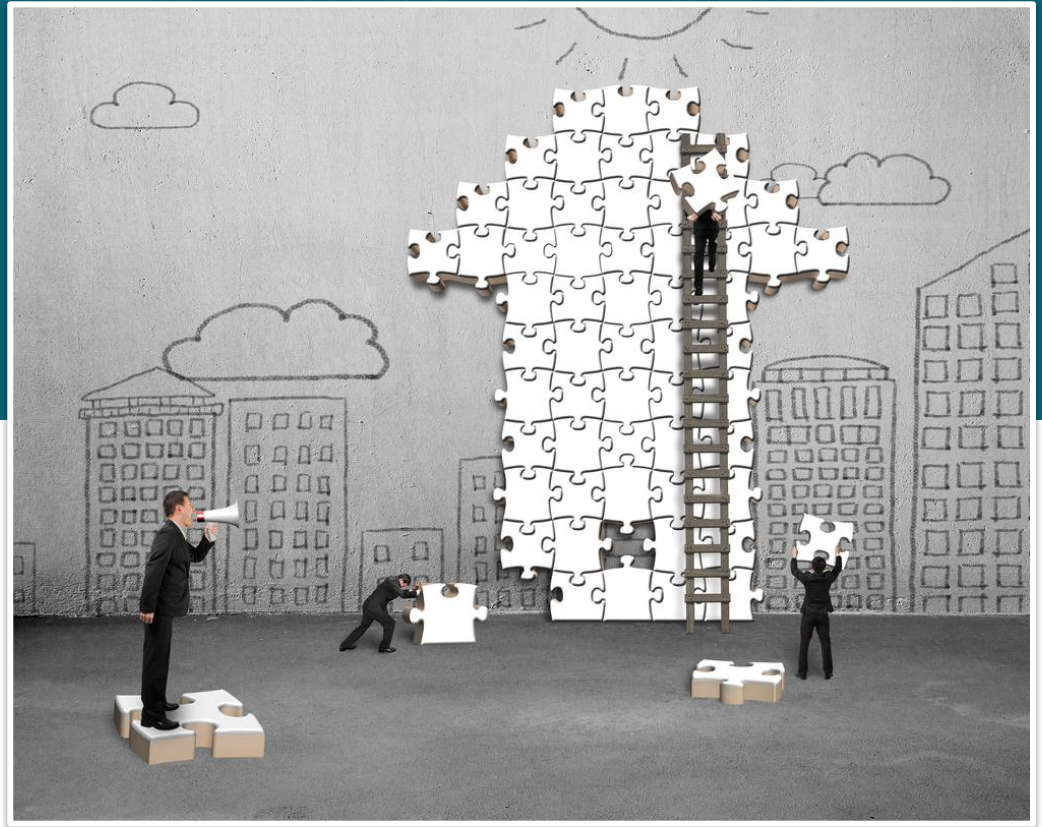
Misdiagnosis

Principle #9

Reciprocity is facilitated by a common goal or purpose.

Trauma Connect

Start with the end in mind



Principle #10

Reciprocity is
courageous.

Trauma Connect

Instructive feedback



Principle #11

Reciprocity is individual,
yet interdependent.

Trauma Connect

Metacognitive



Principle #12

Reciprocity is more concerned with the infinite game than the finite game.

Trauma Connect

Personal agency





imaginal education group
awakening minds, imagining futures



Thank you for your time!

If you have questions or comments, you may email, call or text me:

ivy@imaginaleducationgroup.com
302-245-0479

Come visit me at **Booth #626!**